
Ventilation for buildings — Ductwork — Strength and leakage of circular sheet metal ducts

The European Standard EN 12237:2003 has the status of a
British Standard

ICS 91.140; 91.140.30

National foreword

This British Standard is the official English language version of EN 12237:2003.

The UK participation in its preparation was entrusted to Technical Committee RHE/2, Air distribution and air diffusion, which has the responsibility to:

- aid enquirers to understand the text;
- present to the responsible international/European committee any enquiries on the interpretation, or proposals for change, and keep the UK interests informed;
- monitor related international and European developments and promulgate them in the UK.

A list of organizations represented on this committee can be obtained on request to its secretary.

Cross-references

The British Standards which implement international or European publications referred to in this document may be found in the BSI Catalogue under the section entitled “International Standards Correspondence Index”, or by using the “Search” facility of the BSI Electronic Catalogue or of British Standards Online.

This publication does not purport to include all the necessary provisions of a contract. Users are responsible for its correct application.

Compliance with a British Standard does not of itself confer immunity from legal obligations.

This British Standard was published under the authority of the Standards Policy and Strategy Committee on 16 April 2003

Summary of pages

This document comprises a front cover, an inside front cover, the EN title page, pages 2 to 11 and a back cover.

The BSI copyright date displayed in this document indicates when the document was last issued.

Amendments issued since publication

Amd. No.	Date	Comments

ICS 91.140; 91.140.30

English version

Ventilation for buildings - Ductwork - Strength and leakage of circular sheet metal ducts

Ventilation des bâtiments - Réseau de conduits -
Résistance et étanchéité des conduits circulaires en tôle

Lüftung von Gebäuden - Luftleitungen - Festigkeit und
Dichtheit von Luftleitungen mit rundem Querschnitt aus
Blech

This European Standard was approved by CEN on 18 December 2002.

CEN members are bound to comply with the CEN/CENELEC Internal Regulations which stipulate the conditions for giving this European Standard the status of a national standard without any alteration. Up-to-date lists and bibliographical references concerning such national standards may be obtained on application to the Management Centre or to any CEN member.

This European Standard exists in three official versions (English, French, German). A version in any other language made by translation under the responsibility of a CEN member into its own language and notified to the Management Centre has the same status as the official versions.

CEN members are the national standards bodies of Austria, Belgium, Czech Republic, Denmark, Finland, France, Germany, Greece, Hungary, Iceland, Ireland, Italy, Luxembourg, Malta, Netherlands, Norway, Portugal, Slovakia, Spain, Sweden, Switzerland and United Kingdom.



EUROPEAN COMMITTEE FOR STANDARDIZATION
COMITÉ EUROPÉEN DE NORMALISATION
EUROPÄISCHES KOMITEE FÜR NORMUNG

Management Centre: rue de Stassart, 36 B-1050 Brussels

Contents

	page
Foreword.....	3
1 Scope.....	4
2 Normative references	4
3 Terms, definitions and symbols	4
3.1 Terms and definitions.....	4
3.2 Symbols	6
4 Classification.....	6
5 Requirements	7
5.1 Leakage.....	7
5.2 Strength.....	7
6 Test rig specification	7
7 Test procedure strength and leakage.....	7
7.1 Test sample.....	7
7.2 Test method.....	7
7.3 Correction of leakage test result	8
8 Test report.....	8
Annex A (informative) Recommended procedure if the permitted air leakage rate is exceeded when testing a specific installation.....	10
Bibliography	11

Foreword

This document (EN 12237:2003) has been prepared by Technical Committee CEN /TC 156 "Ventilation for buildings", the secretariat of which is held by BSI.

This European Standard shall be given the status of a national standard, either by publication of an identical text or by endorsement, at the latest by October 2003, and conflicting national standards shall be withdrawn at the latest by October 2003.

Annex A is informative.

The standard is one of a series of standards for ductwork used for ventilation and air conditioning of buildings for human occupancy. The position of this standard in the field of mechanical building services is shown in Figure 1.

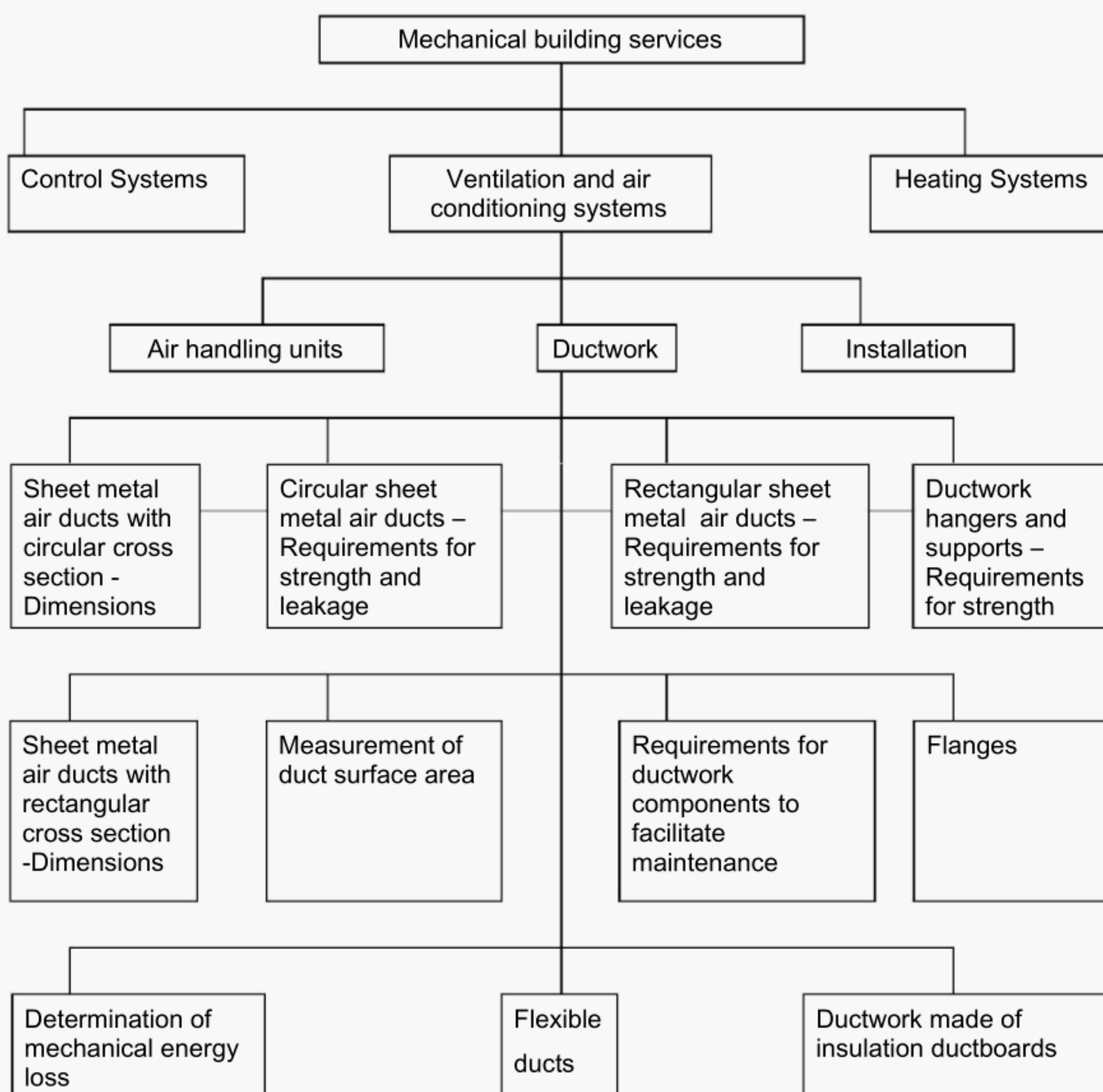


Figure 1-Position of EN 12237 in the field of mechanical building services

According to the CEN/CENELEC Internal Regulations, the national standards organizations of the following countries are bound to implement this European Standard: Austria, Belgium, Czech Republic, Denmark, Finland, France, Germany, Greece, Hungary, Iceland, Ireland, Italy, Luxembourg, Malta, Netherlands, Norway, Portugal, Slovakia, Spain, Sweden, Switzerland and the United Kingdom.

1 Scope

This European Standard specifies requirements and test methods for strength and air leakage of circular ductwork used in air conditioning and ventilation systems in buildings.

The standard is intended to establish the mechanical strength and leakage required to verify the fitness for the intended service as installed ductwork.

The standard is intended for testing specific installations as well as product series in general under in-situ or laboratory conditions. The requirements and methods are applicable also to rectangular ductwork in respect of air leakage.

A recommended procedure, if the permitted air leakage rate is exceeded when testing a specific installation, is given in informative annex A.

2 Normative references

This European Standard incorporates, by dated or undated reference, provisions from other publications. These normative references are cited at the appropriate places in the text, and the publications are listed hereafter. For dated references, subsequent amendments to or revisions of any of these publications apply to this European Standard only when incorporated in it by amendment or revision. For undated references the latest edition of the publication referred to applies (including amendments).

CR 12792:1997, Ventilation for buildings – Symbols and terminology.

prEN 14239:2001, Ventilation for buildings – Ductwork – Measurement of ductwork surface area.

3 Terms, definitions and symbols

3.1 Terms and definitions

For the purposes of this European Standard the terms and definitions given in CR 12792:1997 apply.

3.1.1

duct surface area A_j

surface area of the ductwork under test

[see prEN 14239:2001]

3.1.2

total joint length L

actual total length of the periphery of the installation joints included in the test section of the ductwork

3.1.3

test pressure p_{test}

static air pressure difference between the pressure within the ductwork to be tested and the pressure of the surrounding air

3.1.4**design operating pressure** p_{design}

maximum static air pressure difference at which the installed ductwork is designed to operate under normal conditions

3.1.5**static pressure limit** p_s

maximum design operating pressure for the ductwork according to its air tightness class

NOTE The static pressure limits, positive and negative, for the appropriate air tightness class are specified in Table 2.

3.1.6**air leakage rate** q_v

air leakage flow rate of the ductwork under test

3.1.7**measured air leakage rate** $Q_{v\text{measured}}$

air leakage flow rate before correction

3.1.8**air temperature** t

temperature of the air during the test

3.1.9**atmospheric pressure** p_a

barometric pressure of ambient air during the test

3.1.10**air leakage factor** f

leakage flow rate per unit surface area of the duct ($f = q_v / A_j$)

3.1.11**air leakage limit** f_{max}

maximum permitted leakage factor for the ductwork according to its air tightness class

3.2 Symbols

The nomenclature shown in Table 1 is used throughout this European Standard.

Table 1-Symbols

Symbol	Quantity	Units
A _j	Duct surface area	m ²
f	Air leakage factor	m ³ ·s ⁻¹ m ⁻²
f _{max}	Air leakage limit	m ³ ·s ⁻¹ m ⁻²
L	Total joint length	m
p	Absolute static pressure	Pa
p _a	Atmospheric pressure	Pa
p _d	Velocity pressure	Pa
p _{design}	Design operating pressure	Pa
p _r	Stagnation (or absolute total pressure)	Pa
p _s	Static pressure limit (p - p _a)	Pa
p _{test}	Test pressure	Pa
q _{vlmeasured}	Measured air leakage volume rate	m ³ s ⁻¹ or ls ⁻¹
q _v	Volume rate of air flow at the flow meter	m ³ s ⁻¹ or l s ⁻¹
q _{vl}	Leakage volume rate of air flow	m ³ s ⁻¹ or l s ⁻¹
t	Air temperature	° C

4 Classification

The air tightness classes shall be as specified in Table 2.

Table 2-Ductwork Classification			
Air tightness class	Static pressure limit (p _s)		Air leakage limit (f _{max})
	Pa		³ ·s ⁻¹ m ⁻² m
	Positive	Negative	
			0,65 · 10 ⁻³
A	500	500	0,027 · p _t
			0,65 · 10 ⁻³
B	1 000	750	0,009 · p _t
			0,65 · 10 ⁻³
C	2 000	750	0,003 · p _t
			0,65 · 10 ⁻³
D ^a	2 000	750	0,001 · p _t

^a Ductwork for special applications.

5 Requirements

5.1 Leakage

The leakage factor (f) shall be lower than the air leakage limit (f_{\max}), corresponding to the required air tightness class, specified in Table 2 for any test pressure (p_{test}) lower than or equal to the design operating pressure (p_{design}). The requirements shall be satisfied for positive and negative pressures.

5.2 Strength

The ductwork shall withstand the static pressure limits (p_s) specified in Table 2 without permanent deformation, or any sudden change in leakage flow rate or test pressure. A deformation shall be reported only when it gives a cross section area reduction of at least 10 %.

6 Test rig specification

The test rig shall be inspected by the user before use on site and shall have a calibration certificate, chart or graph, indicating satisfactory calibration within one year of the test for which it is to be used.

7 Test procedure strength and leakage

7.1 Test sample

7.1.1 Sample for testing a specific installation in situ

The section to be tested shall be sealed off from the rest of the system before commencing the test. The test sample shall contain a representative variety of duct dimensions and fittings. The ductwork surface area of the section shall be at least 10 % of the total ductwork surface area, and if possible, at least 10 m².

NOTE The normal ratio between the total joint length (L) and ductwork surface area (A_j) is:

$$1 \leq \frac{L}{A_j} \leq 1,5 \text{ in m}^{-1}$$

7.1.2 Sample for testing a product series in general

The test sample shall contain a representative variety of duct dimensions and fittings. Straight ducts of a minimum length of 2,5 m shall be included in the test section. The ductwork surface area to be tested shall be at least 10 m². The ratio between the total joint length (L) and ductwork surface area (A_j) shall be:

$$\frac{L}{A_j} \geq 1 \text{ in m}^{-1}$$

7.2 Test method

7.2.1 Method for testing a specific installation

The section to be tested shall be subjected to test pressures, positive and negative, not lower than its design operating pressure (p_{design}). The leakage rate readings shall be recorded under stable conditions, i.e. when each test pressure has been maintained within ± 5 % of the specified value for 5 minutes.

NOTE A recommended procedure for the case of excessive air leakage rate is given in annex A.

7.2.2 Method for testing a product series in general

The test sample shall be subjected to several test pressures, at least 5 positive and 5 negative, within a range of test pressures up to and including the static pressure limit (p_s). The leakage rate reading shall be recorded under stable conditions, i.e. when each test pressure has been maintained within $\pm 5\%$ of the specified value for 5 minutes.

7.3 Correction of leakage test result

The measured leakage flow rate shall be corrected if the temperature (t) and/or atmospheric pressure (p_a) are different from the standard conditions ($+ 20\text{ }^\circ\text{C}$ and $101\,325\text{ Pa}$) as follows:

$$q_{vl} = q_{vl\text{measured}} \frac{293}{273 + t} \frac{p_a}{101325}$$

8 Test report

The test report shall include the following information on the tests:

- the date and place of test;
- the test personnel and witnesses;
- a record of the test equipment, including the means of pressurising the sample and the measuring instruments with the appropriate calibration reference;
- the air temperature and atmospheric pressure during the test;
- the building or project reference;
- the design of the installed ductwork including dimensions, length, type of ducts and fittings, assembly method, and the type and distance of hangers/supports;
- the required air tightness class and design operating pressure of the installed ductwork;
- the identity of the installer of ductwork;
- the identity of the manufacturer of ductwork;

The test report shall also include the following:

- the measured values of:
 - ductwork surface area (A_j);
 - total joint length (L);
 - test pressure (p_{test});
 - air leakage rate (q_{vl}) corrected for temperature and barometric pressure;
 - pressurising time;
 - observed deformation of the ductwork during the test;
- the calculated values of:
 - air leakage factor (f);
 - air leakage limit (f_{max}) at the measured test pressure (p_{test});
- airtightness class achieved.

For tests including several test pressures it is recommended to plot the leakage factors as a function of test pressure in a diagram together with the air leakage limit curve.

Annex A (informative)

Recommended procedure if the permitted air leakage rate is exceeded when testing a specific installation

If the air leakage rate exceeds the permitted rate, the test should be extended to include an additional equal percentage of the total ductwork surface area. If the air leakage still exceeds the permitted rate, the entire ductwork should be tested.

Bibliography

EN 1505, Ventilation for buildings – Sheet metal air ducts and fittings with rectangular cross section – Dimensions.

EN 1506, Ventilation for buildings – Sheet metal air ducts and fittings with circular cross section – Dimensions.

prEN 1507, Ventilation for buildings – Sheet metal air ducts with rectangular section – Requirements for strength and leakage.

ENV 12097, Ventilation for buildings – Ductwork – Requirements for ductwork components to facilitate maintenance of ductwork systems.

EN 12236, Ventilation for buildings – Ductwork hangers and supports – Requirements for strength.

BSI — British Standards Institution

BSI is the independent national body responsible for preparing British Standards. It presents the UK view on standards in Europe and at the international level. It is incorporated by Royal Charter.

Revisions

British Standards are updated by amendment or revision. Users of British Standards should make sure that they possess the latest amendments or editions.

It is the constant aim of BSI to improve the quality of our products and services. We would be grateful if anyone finding an inaccuracy or ambiguity while using this British Standard would inform the Secretary of the technical committee responsible, the identity of which can be found on the inside front cover. Tel: +44 (0)20 8996 9000. Fax: +44 (0)20 8996 7400.

BSI offers members an individual updating service called PLUS which ensures that subscribers automatically receive the latest editions of standards.

Buying standards

Orders for all BSI, international and foreign standards publications should be addressed to Customer Services. Tel: +44 (0)20 8996 9001. Fax: +44 (0)20 8996 7001. Email: orders@bsi-global.com. Standards are also available from the BSI website at <http://www.bsi-global.com>.

In response to orders for international standards, it is BSI policy to supply the BSI implementation of those that have been published as British Standards, unless otherwise requested.

Information on standards

BSI provides a wide range of information on national, European and international standards through its Library and its Technical Help to Exporters Service. Various BSI electronic information services are also available which give details on all its products and services. Contact the Information Centre. Tel: +44 (0)20 8996 7111. Fax: +44 (0)20 8996 7048. Email: info@bsi-global.com.

Subscribing members of BSI are kept up to date with standards developments and receive substantial discounts on the purchase price of standards. For details of these and other benefits contact Membership Administration. Tel: +44 (0)20 8996 7002. Fax: +44 (0)20 8996 7001. Email: membership@bsi-global.com.

Information regarding online access to British Standards via British Standards Online can be found at <http://www.bsi-global.com/bsonline>.

Further information about BSI is available on the BSI website at <http://www.bsi-global.com>.

Copyright

Copyright subsists in all BSI publications. BSI also holds the copyright, in the UK, of the publications of the international standardization bodies. Except as permitted under the Copyright, Designs and Patents Act 1988 no extract may be reproduced, stored in a retrieval system or transmitted in any form or by any means – electronic, photocopying, recording or otherwise – without prior written permission from BSI.

This does not preclude the free use, in the course of implementing the standard, of necessary details such as symbols, and size, type or grade designations. If these details are to be used for any other purpose than implementation then the prior written permission of BSI must be obtained.

Details and advice can be obtained from the Copyright & Licensing Manager. Tel: +44 (0)20 8996 7070. Fax: +44 (0)20 8996 7553. Email: copyright@bsi-global.com.